

## Chimes

# Eternal Feather

Composed by Tenmon  
Arranged by Jim Tian

## Ef - The First Tale

**♩ = 144**

3

*mf.*

11

19

24

The musical score for Example 24 is written on a single staff with a treble clef and a key signature of two flats (B-flat and E-flat). The notation begins with a whole rest, followed by a series of notes: a half note B-flat, a quarter note D-flat, a half note E-flat, a quarter note F, a half note G, a quarter note A, a half note B-flat, and a quarter note C. A forte dynamic marking (*f.*) is placed below the first note of this sequence.

49

The first staff of music is in G major (one sharp, F#) and 4/4 time. It contains the following notes: a half note G4, a half note A4, a quarter note B4, a quarter note C5, a quarter note D5, a quarter note E5, a quarter note F#5, a quarter note G5, a quarter note F#5, a quarter note E5, a quarter note D5, a quarter note C5, a quarter note B4, a quarter note A4, and a half note G4. The notes are grouped into measures: the first measure has G4 and A4; the second measure has B4 and C5; the third measure has D5; the fourth measure has E5; the fifth measure has F#5; the sixth measure has G5; the seventh measure has F#5 and E5; the eighth measure has D5 and C5; the ninth measure has B4 and A4; and the tenth measure has G4.

58

The first staff of music is in G major (one sharp, F#) and 4/4 time. It contains the following notes: a whole rest, a half note G4, a half note A4, a half note B4, a half note C5, a half note B4, a half note A4, a half note G4, a half note F#4, and a half note E4.


67

[illegible]

84

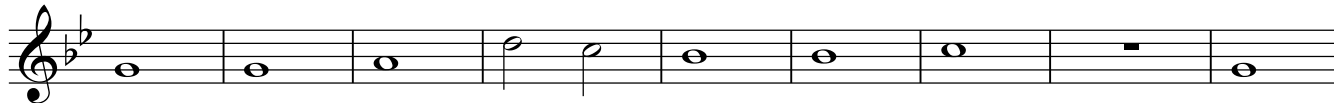
98

24



126

138



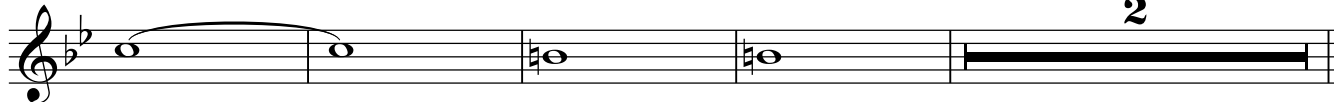
147



156



161 rit.



2