

Friendly like in a childhood

.hack//Roots

Ali Project

♩ = 80

8

A musical score for the song "The Rose Tree". The tempo is marked as ♩ = 80. The key signature has two flats (B-flat and E-flat), and the time signature is 2/4. The score is written for piano (p) and includes a vocal line (V) and a piano accompaniment. The vocal line features a melody with eighth and sixteenth notes, while the piano accompaniment consists of chords and single notes. The score is divided into two systems, each containing a vocal staff and a piano staff. The first system includes a measure with a vocal line and a piano accompaniment, followed by a measure with a vocal line and a piano accompaniment. The second system includes a measure with a vocal line and a piano accompaniment, followed by a measure with a vocal line and a piano accompaniment. The score ends with a double bar line and a key signature change to one flat (B-flat).

5

5

Example 10-10

10

10

14

14

This musical score covers measures 14 through 18 of the piece. The melody in the treble clef continues with a series of eighth and sixteenth notes, featuring a key signature change to one sharp (F#) in measure 15 and another sharp (C#) in measure 16. The bass line provides harmonic support with chords and moving lines. The piece concludes in measure 18 with a final chord in the bass and a whole note in the treble.

19

19

1. 2.

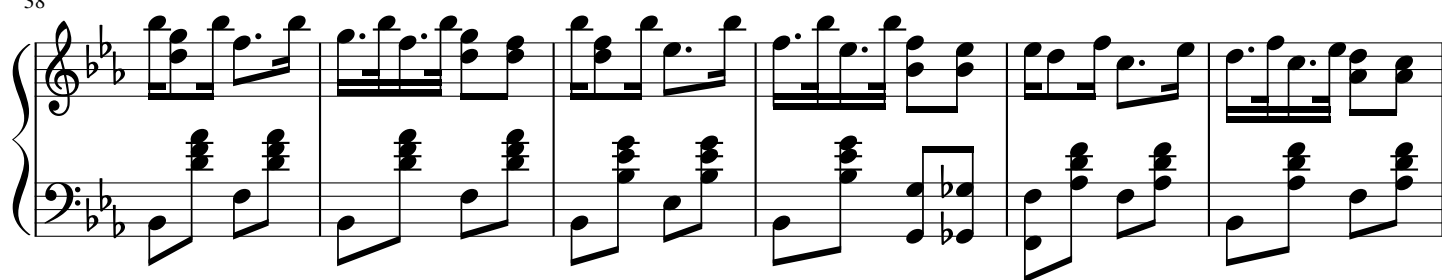
26



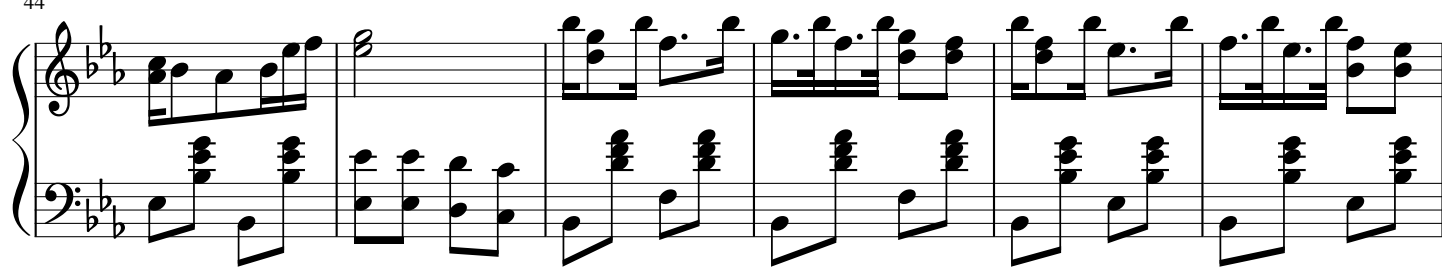
32



38



44



50

