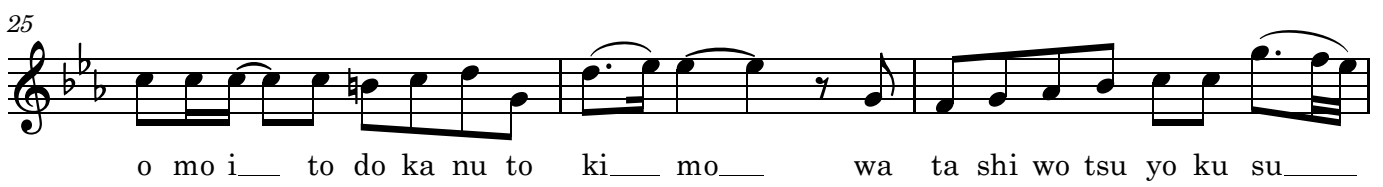
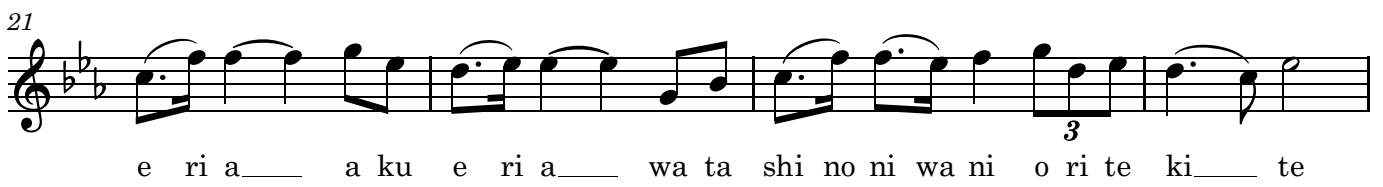
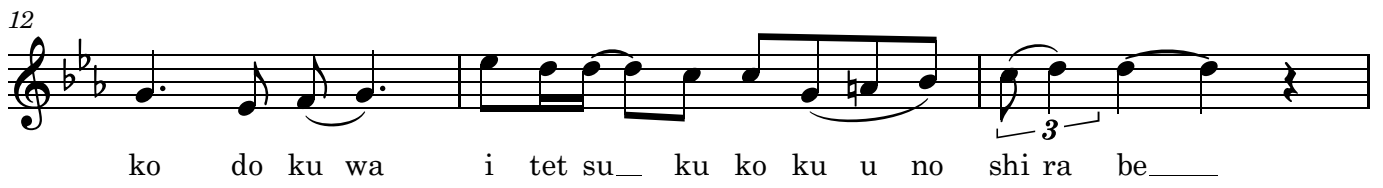
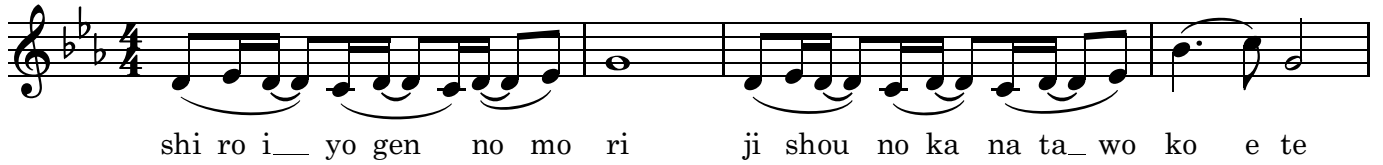


アクエリア舞う空 - Aquaria mau sora

Lyricist: Gabriela Robin

Composer: Yoko Kanno

♩ = 80



28

ru a ku e ri a a ku e ri a i tsu

31

ka nu su ma re ta ho no o ko ko ro mi rai wo ka ke

34

me gu ru ku ro no shi ne n wo ko e mu ka e ni ki te

38

u tsu shi yo wo no ga re te

43

ta zu sa e shi a ka shi no ta e ko to ba su ku na ni i

46

kyou wo yu ke ba

52

61

ri dyus u ri usu a ri a do na ga ria no

64

ku tiumu fi rosu puro me te usu ku o n to do ku ho

67




shī no ta_ bi ji_____ u ta wa a i no ku sa ri_____ a ku

70



e ri a_____ a ku e ri a_____ i shi no shi to ne ni ha na u tsu re do

74



a no hi_ no ya ku so ku no_ se_ to ri wa u mi wo yu_____

77



ku_____ ³ a ku e ri a_____ a ku e ri a_____ tsu ki nu o go ri no ku chi bi

81



ru sen nen sa ki de to daki shi me ta_____ a na ta no ya sa shi i u

85




so a ku e ri a_____ a ku e ri a_____ wa ta shi no ni wa ni o ri te

89



ki_____ te o mo i_ to do ka nu to ki_ mo_ fu

92



ta ri wo tsu yo ku su_____ ru_____ ³ a ku e ri a_____ a ku

95



e ri a_____ i ku yo a o gi mi ta se i za ko ko ro_ mi rai wo ka ke

99



me gu ru___ so no u de ni ne mu ru ma de ko ko ro ne_ mu ru

102



___ma de_ mi rai wo ka ke me gu ru___ ku ro no shi_ n en wo ko

105



e mu ka e ni ki te_____

Detailed description: This block contains three staves of musical notation in G major (one flat). The first staff (measures 99-101) features a triplet of eighth notes on the first measure, followed by a quarter rest, and then eighth notes. The second staff (measures 102-104) includes a triplet of eighth notes on the third measure and quarter rests on the first and second measures. The third staff (measures 105-107) begins with a whole note, followed by eighth notes, and ends with a double bar line.